



# Funding & Support News

March 2024

Radio 4 spotlight | Marketing advice sessions | Latest funding opportunities

## Welcome to the latest Funding and Support News from Norfolk Community Foundation.

Whether it's funding, training, professional support or advice and guidance, we're on hand to help connect you with what your organisation needs to make a real difference to communities across Norfolk.

Can't find what you're looking for below or want to have a chat? Feel free to get in touch with our Programmes Team today.

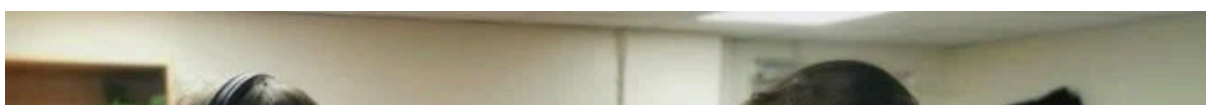


**Don't miss it:**  
Norfolk goes national



## Radio 4 spotlights Nourishing Norfolk

We were delighted to work with [Radio 4's Food Programme](#) and national food icon Delia Smith to take to a national stage the story of our Nourishing Norfolk programme and highlight the work happening in our local communities to ensure no one in Norfolk goes hungry.





Listen now



## Funding opportunities: Helping you make great things happen



We offer [a range of funding opportunities](#) for voluntary groups and charities doing great work across Norfolk. We aim to invest in great ideas led by local people that make a real difference in our communities. Take a look below at some of the funds we currently have open.

### Chiplow Wind Farm Community Benefit Fund: **King's Lynn and West Norfolk** | **Closes 19th March**

Grants are available to support voluntary and community organisations operating within a 10-mile radius of the Chiplow Project – a 4-turbine wind farm project located at Syderstone in Norfolk. For decisions in early to mid-April, applications should be submitted by 5pm Tuesday 19th March 2024.

Find out more and apply

---

### Jack's Lane Wind Farm Community Fund: **King's Lynn and West Norfolk** | **Closes 16th April**

Grants of up to **£5,000** are available for activities providing economic, environmental, social or cultural benefit to people living in the parishes of North Creake, South Creake, Stanhoe, Syderstone, Bagthorpe with Barmer, Barwick, Bircham, Burnham Market, Docking, East Rudham and Tattersett.

Find out more and apply

---

### Dudgeon Community STEM in Schools Fund: **Breckland, Great Yarmouth and North Norfolk** | **Open**

This Fund is open for expressions of interest for funding to support schools and other organisations to deliver projects designed to engage students in Science, Technology, Engineering and Mathematics (STEM) subjects.

Find out more and apply

---

### **Saracen's Norfolk Fund: [South Norfolk | Open](#)**

Grants of up to **£5,000** are available to support projects in South Norfolk that are led by local people, and aim to enhance quality of life in small rural communities

Find out more and apply



### **Shakespeare's Guildhall Trust Fund: [King's Lynn & West Norfolk | Open](#)**

Grants of up to **£5,000** are available to support opportunities for local communities to get more involved in a range of creative, cultural and heritage activities in King's Lynn. Priority will be given to activities addressing one or more of the original charitable aims of the Shakespeare's Guildhall Trust.

Find out more and apply

---

### **The Welcome Backpacks Fund: [Norfolk | Open](#)**

Grants of up to **£2,000** are available to help organisations provide a 'Welcome Backpack' to any individuals who have an identified need, but particularly people who are newly seeking asylum.

Find out more and apply

---

### **Weston Windfarm Community Fund: [Breckland and Broadland | Open](#)**

Grants of up to **£5,000** are available to support community projects that will benefit the residents of the parishes of Weston Longville, Morton on the Hill, Attlebridge and Hockering.

Find out more and apply

---

### **Villages Windfarm Community Fund: [Holton, Sotherton and Westhall | Open](#)**

Grants of up to **£5,000** are available to support projects which will benefit the residents of the parishes of Holton, Sotherton and Westhall. Funding can be used to support activity by small community organisations which has an economic, environmental, educational, social or cultural benefit for people living in the area.

Find out more and apply



**Funding plus:**  
Providing much more than funding



**Funding  
Plus**

Offering much more than funding



**Empowering  
Communities**

Connect • Collaborate • Champion



**Funding Plus** is our programme of **free** information, advice and resources, in partnership with **Empowering Communities**, that helps charities access the help they need to overcome organisational challenges, build networks and plan for the future. From pro-bono support from local businesses to webinars on topics such as health and safety and HR and 1:1 sessions from business experts, we're committed to offering more than funding to help Norfolk's charities shine brighter.

**'Ask Us About Marketing' with Creativity Unbound: 19 March 2024**

Is your charity heading in a new direction? Do you know how to turn your vision into a plan? Taking place monthly, this is your 1 on 1 opportunity to ask a creative agency any questions you may have about your charity's design, marketing and fundraising needs, helping you to achieve better engagement, long term growth and financial stability.

[Book now](#)

**'Ask Us About Marketing' with Creativity Unbound:  
23 April 2024**

Is your charity heading in a new direction? Do you know how to turn your vision into a plan? Taking place monthly, this is your 1 on 1 opportunity to ask a creative agency any questions you may have about your charity's design, marketing and fundraising needs, helping you to achieve better engagement, long term growth and financial stability.

[Book now](#)

## Are you up to date with our programme of webinars?

Have you had a chance to watch our latest webinars? Covering topics such as health and safety, accounting and financial resilience, we've brought together Norfolk's experts to give you essential advice and guidance. Browse our collection of webinar recordings today. Is there something missing you really want covered? Let us know!

[Browse webinars](#)

---

### Norfolk ProHelp

[Norfolk ProHelp](#) is a network of professional firms committed to making a local difference by providing free advice and support to the voluntary and not-for-profit sector. Examples of ProHelp support include: conveyancing and lease negotiations, website design, accountancy and legal questions. Click below to find out how your organisation could get business support.

[Find out more](#)



**Stay connected:**  
Sharing knowledge and experience



### Blog: Claire Cullens on malnutrition in Norfolk

Claire Cullens, Chief Executive of Norfolk Community Foundation, shares her thoughts on a recent report revealing Norfolk is the most malnourished area in the country.

[Find out more](#)

---

### Helping young people engage in positive activities

We recently showed the Norfolk Police Crime Commissioner how funding is helping young people engage in positive activities. Read our latest case study about the impact the SPACE (Supporting Positive Activities and Community Engagement) Fund has had on local young people, helping to prevent youth offending.

[Find out more](#)

---

### Searching for other funding opportunities?

Did you know that you can search the database of Government grants available? Click the link below and see if any fit with your funding needs!

[Find out more](#)



**Meet the team:**  
Introducing Sophie





## Get to know Sophie Berry, Corporate Giving Manager

Sophie is our Corporate Giving Manager, helping to build on the Foundation's experience of working with local businesses to drive forward corporate giving in Norfolk. Sophie is passionate about helping local businesses understand how they can make a positive, meaningful and impactful contribution to our local communities, in line with the emerging focus on ESG (Environmental, Social and Governance). Sophie first started working in Norfolk's voluntary sector in 2005.

### Ask me about...

How your business can give back to the Norfolk community with impact. If you have found yourself at that start of thinking about ESG Policy and feeling like you don't know where to begin, I can help you deliver the 'S' and 'E', so pick up the phone or drop me an email and let's see where the conversation takes us.

### I love Norfolk because...

We are so lucky to have the most perfect mix of a bustling city and towns, peaceful countryside, sandy beaches, heritage and a community that is proactive in supporting the needs of the local population.

### Did you know...

In my spare time I crave wide open countryside spaces and enjoy nothing more than a rural or coastal walk followed by a slice of cake and a hot chocolate (with cream and marshmallows!).

Find out more about the rest of the team



Is there something we can help with?

Find guidance and resources

Book a slot with the team

**Publicise your grant**

**Explore Norfolk ProHelp**

**Explore Funding Plus**

---



**[www.norfolkfoundation.com](http://www.norfolkfoundation.com)**

01603 623958 | [grants@norfolkfoundation.com](mailto:grants@norfolkfoundation.com) | First Floor, Carmelite House, 2 St James Court, Norwich, NR3 1SL  
Registered charity number 1110817

Together, Norfolk shines brighter

[Privacy policy](#) | [Unsubscribe](#) | [Forward](#)